

FLAP SYSTEM - TROUBLESHOOTING

1. General

- A. A troubleshooting chart has been developed to aid the maintenance technician in system understanding. Refer to Figure 101.

Figure 101 : Sheet 1 : Flap System Troubleshooting Chart

A11614

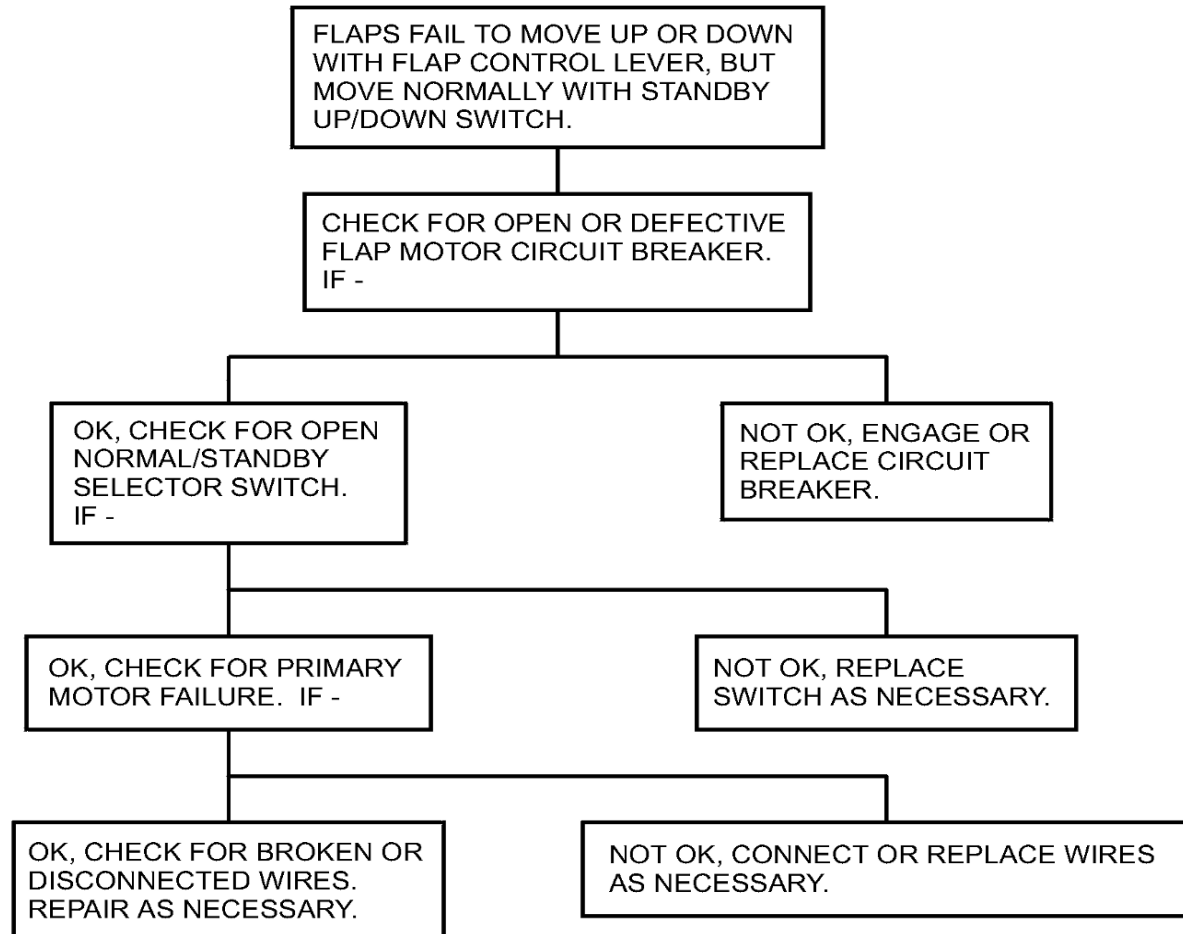


Figure 101 : Sheet 2 : Flap System Troubleshooting Chart

A11615

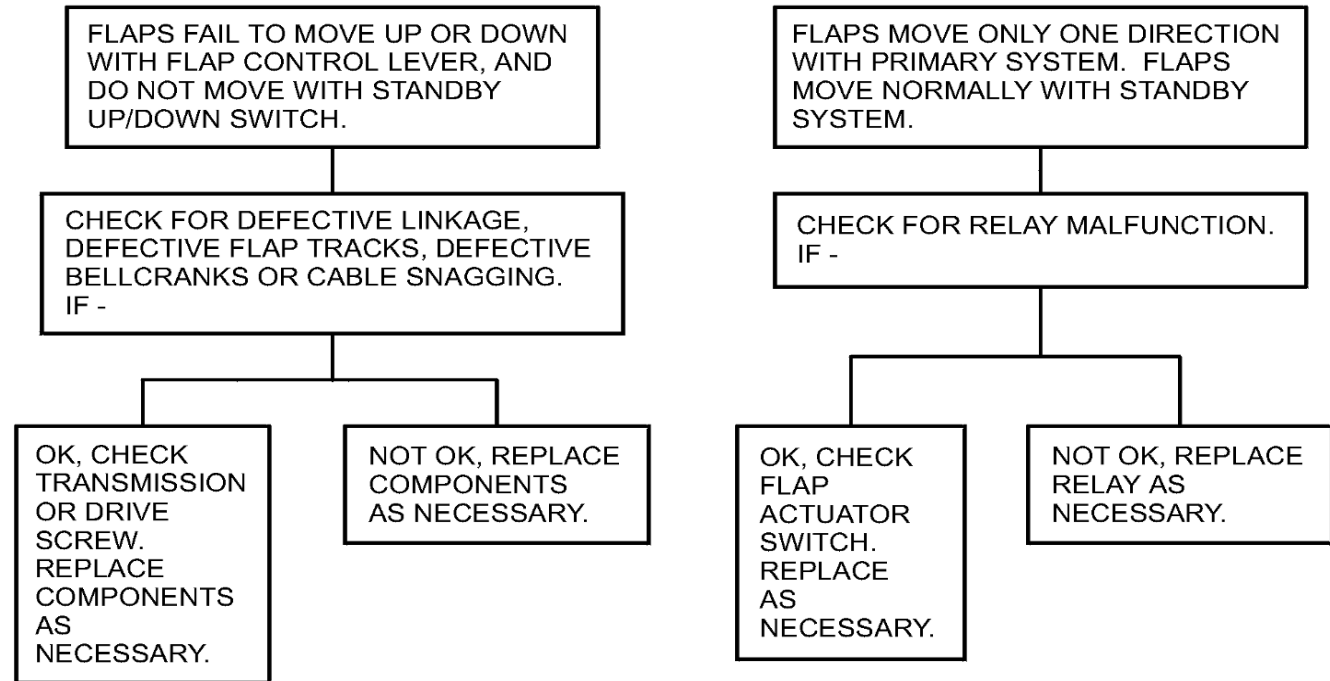


Figure 101 : Sheet 3 : Flap System Troubleshooting Chart

A11616

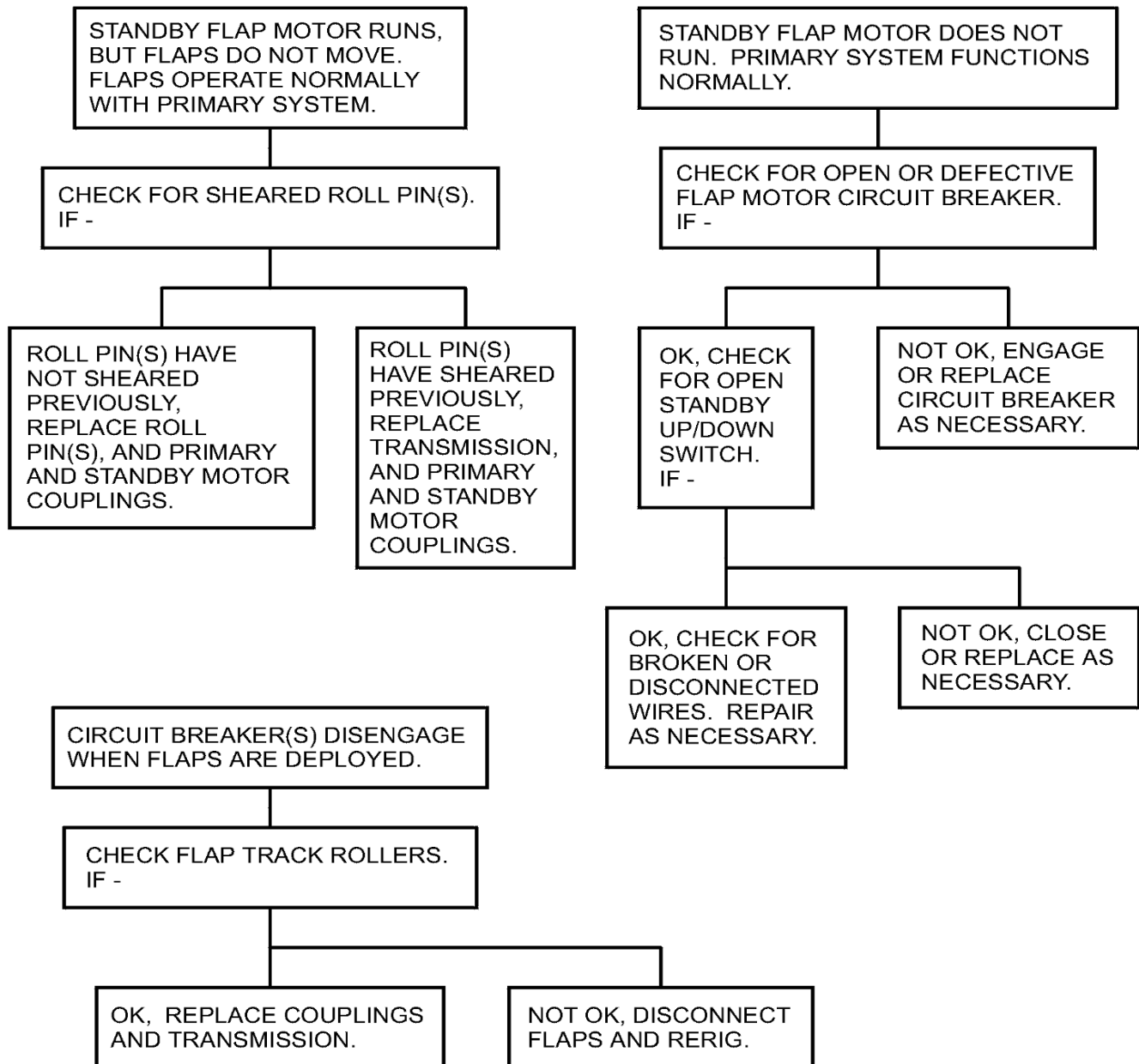


Figure 101 : Sheet 4 : Flap System Troubleshooting Chart

A11617

FLAPS NOT
SYMMETRICAL
IN FULL DOWN
POSITION.

CHECK FOR
IMPROPERLY
CLOCKED
INBOARD AFT
BELLCRANKS.
RERIG FLAPS.

UNABLE TO ADJUST
FLAP CABLE TO
PROPER TENSION.

CHECK FOR TOO LONG
OR TOO SHORT
CONNECTING ROD
BETWEEN INBOARD
AND OUTBOARD
BELLCRANKS. RERIG
FLAPS.

DIFFERENT FLAP POSITION
WHEN APPROACHING FROM
A HIGHER SETTING THAN
FROM A LOWER SETTING
(GREATER THAN 1 DEGREE)
AT 10 AND 20 DEGREE
POSITIONS.

CHECK FOR IMPROPERLY
RIGGED FLAP SWITCH
ACTUATOR. RERIG FLAP
SWITCH ACTUATOR.